

ELT 12

Stacker truck with pallet truck function able to overcome the obstacles



A RICHIESTA



A RICHIESTA



STRENGTHS:

ELT 12 by Samag is a stacker truck, with built-in pallet truck function, suitable for picking and storage operations with lifting function of the stabilisers to overcome obstacles.

The tiller arm and the spring loaded central drive wheel allow keeping a constant contact with the floor and reducing driver arm vibrations, as well as minimum steering effort even with full load. ELT 12 is characterised by excellent stability, and the AC alternating current traction motor ensures greater power and maximum efficiency with less maintenance.

✓ **LOAD CAPACITY UP TO 1.200 KG**

✓ **SPECIAL DIMENSIONS UPON REQUEST**

SOME OPTIONALS



OPERATOR TRANSPORT PLATFORM



METALLIC/GALVANISED VERSION



LITHIUM BATTERY

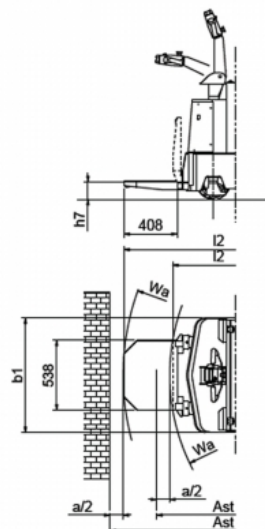
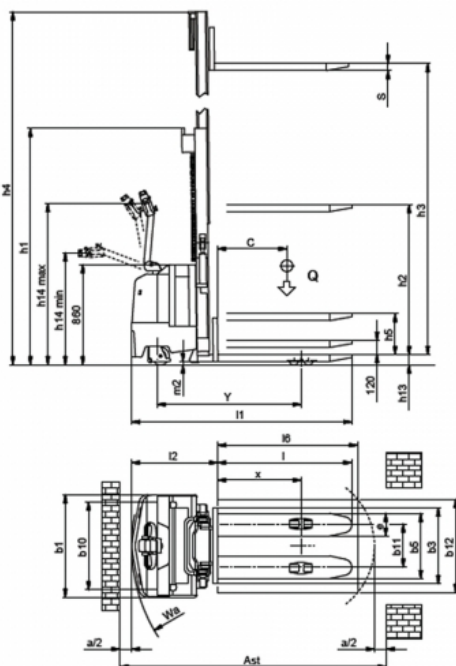


SCALE/PRINTER

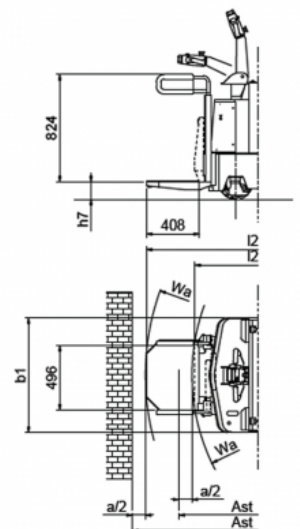


USE IN COLD STORE

Type	Stacker trucks	Class	Stacker trucks for non-intensive use
Load capacity (Kg)	1200	Lifting capacity (mm)	4100



Senza protezioni laterali per velocità fino a 6 Km/h



Con protezioni laterali per velocità > di 6 Km/h

Characteristics

Characteristics	1.1	Manufacturer			SAMAG	
	1.2	Manufacturer's type designation			ELT 12	ELT 12 P.O.
	1.3	Drive: electric (battery or mains), diesel, petrol, fuel gas			Electric	
	1.4	Operator type: hand, pedestrian, standing, seated, order-picker			pedestrian	seated
	1.5	Load capacity/rated load	Q	t	1,2	
	1.6	Load centre distance	C	mm	600	
	1.8	Load distance, centre of drive axle to fork	x	mm	713 (2)	
	1.9	Wheelbase	Y	mm	1233 (2)	
Weight	2.1	Service weight (battery included)		Kg	1030 (4)	1070 (4)
	2.2	Axle loading, laden (front / rear)		Kg	828 / 1402	946 / 1324
	2.3	Axle loading, unladen (front / rear)		Kg	760 / 270	830 / 240
Wheels and frame	3.1	Tyres: solid rubber, superelastic, pneumatic, polyurethane			Solid rubber	Vulkollan
	3.2	Tyre size, front		mm	260x85 / 150x50	
	3.3	Tyre size, rear		mm	85x70	
	3.5	Wheels, number front rear (x = driven wheels)			3/4	
	3.6	Tread, front	b10	mm	754	
	3.7	Tread, rear	b11	mm	365	
Dimensions	4.2	Height, mast lowered	h1	mm	(see table)	
	4.3	Free lift	h2	mm	(see table)	
	4.4	Lift	h3	mm	(see table)	
	4.5	Height, mast extended	h4	mm	(see table)	
	4.6	Initial lift	h5	mm	(see table)	
	4.8	Seat height / stand height	h7	mm	135	
	4.9	Height of tiller in drive position (min. / max.)	h14	mm	952 / 1326	
	4.15	Height of forks from ground	h13	mm	90	
	4.19	Overall length	l1	mm	(see table)	
	4.20	Length of face of forks	l2	mm	(see table)	
	4.21	Overall width	b1	mm	880	
	4.22	Fork dimensions	sl1ell	mm	70x195x1150	
	4.24	Fork - carriage width	b3	mm	650	
	4.25	External fork widths	b5	mm	560	
	4.32	Ground clearance, centre of wheelbase	m2	mm	30	
	4.34	Aisle width for pallets 800 x 1200 crossways	Ast	mm	(see table)	
	4.35	Turning radius	Wa	mm	1451 (2)	1579 - 1937 (2) (3)
Performance	5.1	Travel speed (laden / unladen)		Km/h	6 / 6	6 / 6 - 7,5 / 7,5
	5.2	Lift speed (laden / unladen)		m/s	0,12 / 0,22	
	5.3	Lowering speed (laden / unladen)		m/s	0,30 / 0,24	
	5.7	Gradeability (laden / unladen)		%	---	
	5.8	Max. gradeability (laden / unladen)		%	7 / 15	
	5.10	Service brake			Electric	
Electric motor	6.1	Traction motor, power KB 60'		KW	1,8 AC	
	6.2	Lifting motor, performance 15% ED		KW	2,5	
	6.3	Battery DIN 43531/35/36 A, B, C,			yes	
	6.4	Tension / nominal capacity		V / Ah	24 / 240	
	6.5	Battery weight (± 5%)		Kg	204	
	8.1	Control type			Electric AC	
	8.4	Sound level at the driver's ear according to DIN 10 053		dB/(A)	<70	

Ast comprende "a" (spazio di manovra) = 200 mm ed è inteso per posto pallet vuoto

(1) Con stabilizzatori sollevati aumenta di 120 mm

(2) Con stabilizzatori sollevati diminuisce di 46 mm

(3) Pedana verticale / Pedana orizzontale

(4) Valori riferiti a "D 3000"

Overall dimensions

	OVERALL DIMENSIONS OF LIFTING GROUPS												
	Lift height	h3	h5 (1)	h2 (1)	L1	L1 P.O. (1)	L2	L2 P.O. (3)	h1 (1)	h4	h4 grid	Ast	Ast P.O. (3)
Non telescopic NT	1700	1620	1620	/	1889	1994-2368	739	844-1218	2110	2130	2550	2139	2267-2625
Duplex "D"	2500	2430	368	/	1888	/	738	/	1810	2990	3355	2138	/
	3000	2930	368	/	1888	1994-2368	738	844-1218	2060	3490	3855	2138	2266-2624
	3500	3430	368	/	1888	1994-2368	738	844-1218	2310	3990	4355	2138	2266-2624
	4100	4030	350	/	1888	1994-2368	738	844-1218	2610	4595	5435	2138	2266-2624
Duplex "DL"	2500	2430	/	1270	1888	/	738	/	1810	2990	3355	2138	/
	3000	2930	/	1520	1888	1994-2368	738	844-1218	2060	3490	3855	2138	2266-2624
	3500	3430	/	1770	1888	1994-2368	738	844-1218	2310	3990	4355	2138	2266-2624

Ast comprende "a" (spazio di manovra) = 200 mm ed è inteso per posto pallet vuoto

- (1) Con stabilizzatori sollevati aumenta di 120 mm
- (2) Con stabilizzatori sollevati diminuisce di 46 mm
- (3) Pedana verticale / Pedana orizzontale
- (4) Valori riferiti a "D 3000"