

MAX 1-L

Order picker truck for quick and comfortable low and medium picking operations with fork levelling



MAX 1-L by Samag is an order picker truck, available with lifting capacity from 1.200 mm to 1.800 mm from operator foot (maximum picking height 3.300 mm) particularly suitable for quick and comfortable low and medium picking operations with fork levelling.

NEW DRIVING ERGONOMICS

- **Electronic AC traction** and steering control connected via **CAN-bus**
- **180° steering angle** with progressive travel speed reduction according to the angle and **progressive travel speed reduction** according to the lifting height
- Possibility of choosing **three performance levels**: P1-P2-P3
- **Side access gates to the driver position** with 3 bars to facilitate the operator ascent and descent from the cabin
- Possibility of moving and lifting the **operator position** with side gates open up to 1.200 mm height
- Possibility of **adding accessories** (document holder, bottle holder).

✓ **LOAD CAPACITY UP TO 1.000 KG**

✓ **SPECIAL DIMENSIONS UPON REQUEST**

SOME OPTIONALS



LITHIUM BATTERY

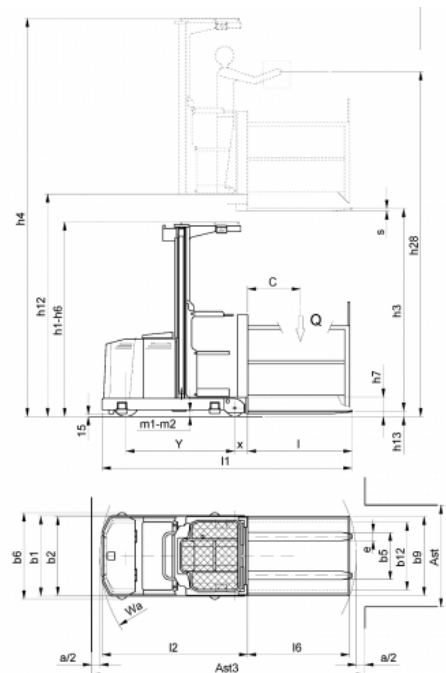
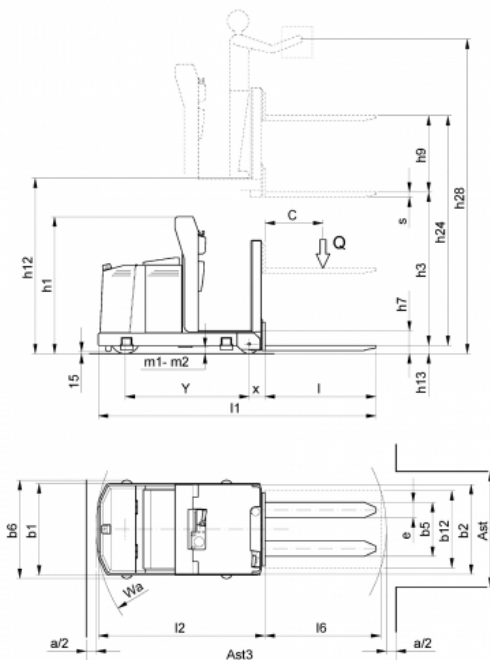


SCALE/PRINTER



USE IN COLD STORE

Type	Order pickers	Class	Ride-on order pickers with operator platform for normal-intensive use
Load capacity (Kg)	1000	Lifting capacity (mm)	1790



Characteristics

	1.1	Manufacturer	SAMAG				
			MAX 1L-ac H1200	MAX 1L-ac H1800			
Characteristics	1.2	Manufacturer's type designation					
	1.3	Drive: electric (battery or mains), diesel, petrol, fuel gas		Electric			
	1.4	Operator type: hand, pedestrian, standing, seated, order-picker		standing			
	1.5	Load capacity/rated load	Q	t	1		
	1.6	Load centre distance	C	mm	600		
	1.8	Load distance, centre of drive axle to fork	x	mm	165 (2)		
	1.9	Wheelbase con forche sollevate	Y	mm	1285		
Weight	2.1	Service weight (± 5% - battery included)		Kg	1670 (1)	1810 (1)	
	2.2	Axle loading, laden (front / rear)		Kg	368 / 2392	399 / 2501	
	2.3	Axle loading, unladen (front / rear)		Kg	940 / 730	980 / 830	
Wheels and frame	3.1	Tyres: solid rubber, superelastic, pneumatic, polyurethane				Vulkollan	
	3.2	Tyre size, front		mm		310 x 100	
	3.3	Tyre size, rear		mm		200 x 105	
	3.5	Wheels, number front rear (x = driven wheels)					1X - 2
	3.6	Tread, front	b10	mm			-
	3.7	Tread, rear	b11	mm			820
	Dimensions	4.2	Height, mast lowered	h1	mm	1420	2300
4.4		Lift	h3	mm	960	1555	
4.4.1		Total forks lift (h3+h9)	h24	mm	1760	2355	
4.5		Height, mast extended	h4	mm	-	3855	
4.7		Height of overhead guard (cabin)	h6	mm	-	2300	
4.8		Seat height / stand height	h7	mm		235	
4.11		Additional lift	h9	mm		800	
4.14		Stand height, elevated	h12	mm	1195	1790	
4.14.1		Height forks lowered (h12 + 1600 mm)	h28	mm	2795	3390	
4.15		Height of forks from ground	h13	mm		85 (6)	
4.19		Overall length	l1	mm	2530 / 2730 / 2880 (2)		
4.20		Length of face of forks	l2	mm		1730 (2)	
4.21		Overall width	b1/b2	mm		950 / 930	
4.22		Fork dimensions	sl/ell	mm		55 / 160 / 800-1000-1150 (3)	
4.23		Fork carriage DIN 15 173, class/type A,B				Welded fork	
4.24		Fork - carriage width	b3	mm		640 - 760 (4)	
4.25		External fork widths	b5	mm		560 - 680 (5)	
4.27		External width guide rollers	b6	mm		1020	
4.31		Ground clearance, laden, below mast	m1	mm		65	
4.32	Ground clearance, centre of wheelbase	m2	mm		65		
4.34	Aisle width for pallets 800 x 1200 crossways	Ast	mm		(see table)		
4.35	Turning radius	Wa	mm		1589		
4.42	Front head aisle with pallet 800x1200 forked	Ast3	mm		(see table)		
4.46	Width side protection cage	b9	mm		-	-	
Performance	5.1	Travel speed (laden / unladen)		Km/h		9,5 - 10,5	
	5.2	Lift speed (laden / unladen)		m/s	0,12 / 0,16	0,12 / 0,16	
	5.3	Lowering speed (con / senza carico)		m/s	0,15 / 0,14	0,22 / 0,17	
	5.7	Pendenza superabile KB 30' (con / senza carico)		%		0	
	5.8	Max. gradeability (laden / unladen)		%		5	
	5.9	Acceleration time (laden / unladen)		s		6,9 / 5,9	
Electric motor	5.10	Service brake				Electric	
	6.1	Traction motor, power KB 60'		KW		1,5 AC	
	6.2	Lifting motor, performance 15% ED		KW		2,5	
		Steering motor		KW		0,3 AC	
	6.3	Battery DIN 43531/35/36 A, B, C,				yes	
	6.4	Tension / nominal capacity		V / Ah		24 / 450-625	
	6.5	Battery weight (± 5%)		Kg		373-457	
Other data	6.6	Energy consumption according To VDI cycle		KWh/h	-	-	
	8.1	Type of command				Electric AC	
	8.4	Sound level at the driver's ear according to DIN 10 053		dB/(A)		<70	

Ast, Ast3 e svolta a 90° comprendono "a" (spazio di manovra) = 200 mm

(1) Con batteria da 450 Ah

(2) Con forche ad aggancio tipo ISO 2330 = + 35 mm

(3) Forche ad aggancio tipo ISO 2330 = 35 / 100 / 800 - 1000 - 1200

(4) Per forche ad aggancio tipo ISO 2330 = 820 mm

(5) Forche ad aggancio tipo ISO 2330 = 288 - 744 mm

(6) Con forche ad aggancio tipo ISO 2330 = 65 mm

(7) Valori minimi per corridoi di lavoro con guide a terra

(8) Valori minimi per corridoi di testata (i valori sono intesi fra i bordi di raccordo delle eventuali guide a terra)

Corridor dimensions

DIMENSIONS OF WORKING AND FRONT HEAD AISLES

Pallet	b12	800	1000	1200	800	1000	1200	800	1000	1200
	I6	800	800	800	1000	1000	1000	1200	1200	1200
Ast (7)		1150	1200	1400	1150	1200	1400	1150	1200	1400
Ast3 (2)		2835	2880	2925	3025	3060	3100	3215	3245	3280
Svolta 90°		1825	1865	1960	1920	1955	2045	2015	2050	2135

Ast, Ast3 e svolta a 90° comprendono "a" (spazio di manovra) = 200 mm

(1) Con batteria da 450 Ah

(2) Con forche ad aggancio tipo ISO 2330 = + 35 mm

(3) Forche ad aggancio tipo ISO 2330 = 35 / 100 / 800 - 1000 - 1200

(4) Per forche ad aggancio tipo ISO 2330 = 820 mm

(5) Forche ad aggancio tipo ISO 2330 = 288 - 744 mm

(6) Con forche ad aggancio tipo ISO 2330 = 65 mm

(7) Valori minimi per corridoi di lavoro con guide a terra

(8) Valori minimi per corridoi di testata (i valori sono intesi fra i bordi di raccordo delle eventuali guide a terra)