

# MAX 2

Order picker truck for quick and comfortable medium level picking operations



#### IT DOES NOT MOVE THE PRODUCTS, IT CARRIES THEM

MAX 2 by Samag is one of the most compact order picker trucks in its sector (L2 = 1.700 mm) and is the ideal solution for quick and comfortable medium picking operations.

MAX 2 order picker truck by Samag is available with picking heights up to 6.300 mm.

#### NEW DRIVING ERGONOMICS

- **Electronic AC traction** and steering control connected via **CAN-bus**
- **180° steering angle** with progressive travel speed reduction according to the angle and **progressive travel speed reduction** according to the lifting height
- Possibility of choosing **three performance levels**: P1-P2-P3
- **Side access gates to the driver position** with 3 bars to facilitate the operator ascent and descent from the cabin
- Possibility of moving and lifting the **operator position** with side gates open up to 1.200 mm height
- Possibility of **adding accessories** (document holder, bottle holder).

✓ **LOAD CAPACITY UP TO 800 KG**

✓ **SPECIAL DIMENSIONS UPON REQUEST**

#### SOME OPTIONALS



LITHIUM BATTERY

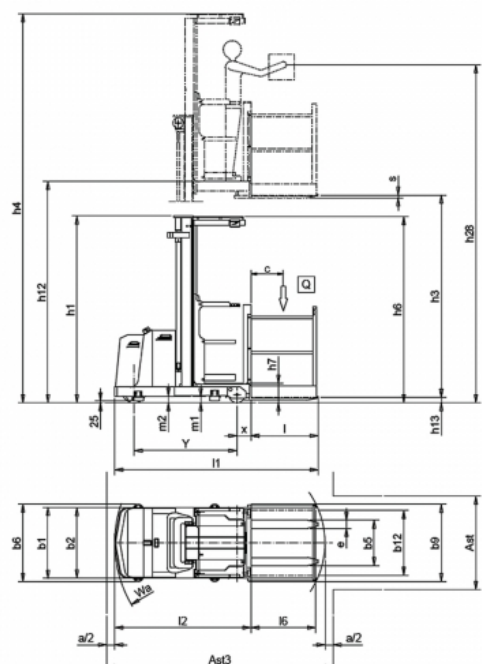
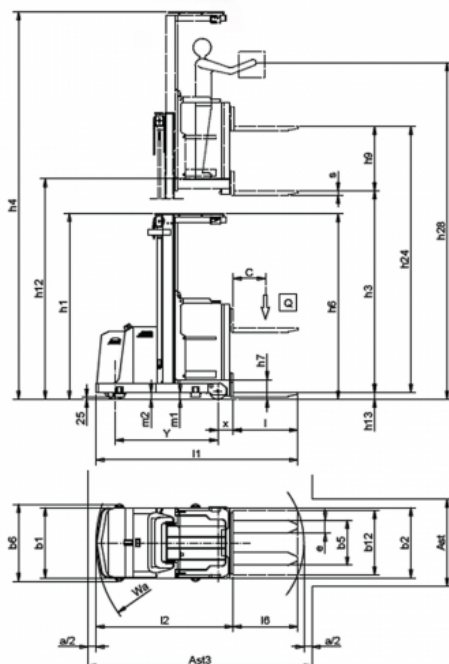


SCALE/PRINTER



USE IN COLD STORE

Type	Order pickers	Class	Ride-on order pickers with operator platform for normal-intensive use
Load capacity (Kg)	800	Lifting capacity (mm)	4500



### Characteristics

	1.1	Manufacturer			SAMAG		
					MAX 2-ac	MAX 2-ac SL	
<b>Characteristics</b>	1.2	Manufacturer's type designation					
	1.3	Drive: electric (battery or mains), diesel, petrol, fuel gas				Electric	
	1.4	Operator type: hand, pedestrian, standing, seated, order-picker				standing	
	1.5	Load capacity/rated load	Q	t		0,8	
	1.6	Load centre distance	C	mm		400	
	1.8	Load distance, centre of drive axle to fork	x	mm	193	175	
<b>Weight</b>	1.9	Wheelbase con forche sollevate	Y	mm		1270	
	2.1	Service weight (± 5% - battery included)		Kg		1550 (1)	
	2.2	Axle loading, laden (front / rear)		Kg		450 / 1990	
	2.3	Axle loading, unladen (front / rear)		Kg		810 / 740	
	<b>Wheels and frame</b>	3.1	Tyres: solid rubber, superelastic, pneumatic, polyurethane				Vulkollan
		3.2	Tyre size, front		mm		310 x 100
3.3		Tyre size, rear		mm		200 x 105	
3.5		Wheels, number front rear (x = driven wheels)				1X - 2	
3.6		Tread, front	b10	mm		-	
3.7		Tread, rear	b11	mm		760 / 974 (2)	
<b>Dimensions</b>	4.2	Height, mast lowered	h1	mm	(see table)	(see table)	
	4.4	Lift	h3	mm	(see table)	(see table)	
	4.4.1	Total forks lift (h3+h9)	h24	mm	(see table)	-	
	4.5	Height, mast extended	h4	mm	(see table)	(see table)	
	4.7	Height of overhead guard (cabin)	h6	mm		2300	
	4.8	Seat height / stand height	h7	mm		235	
	4.11	Additional lift	h9	mm	800	-	
	4.14	Stand height, elevated	h12	mm	(see table)	(see table)	
	4.14.1	Height forks lowered (h12 + 1600 mm)	h28	mm	(see table)	(see table)	
	4.15	Height of forks from ground	h13	mm	85	65	
	4.19	Overall length	l1	mm	2500	2515	
	4.20	Length of face of forks	l2	mm	1700	1685	
	4.21	Overall width	b1/b2	mm	880-1100 / 870	880-1100 / 955 (3)	
	4.22	Fork dimensions	sl1	mm	55 / 160 / 800	35 / 100 / 830	
	4.23	Fork carriage DIN 15 173, class/type A,B				Welded fork	
	4.24	Fork - carriage width	b3	mm		-	
	4.25	External fork widths	b5	mm	560 - 680	560-650 (4)	
	4.27	External width guide rollers	b6	mm		(see table)	
4.31	Ground clearance, laden, below mast	m1	mm		75		
4.32	Ground clearance, centre of wheelbase	m2	mm		75		
4.34	Aisle width for pallets 800 x 1200 crossways	Ast	mm		(see table)		
4.35	Turning radius	Wa	mm		1510		
4.42	Front head aisle with pallet 800x1200 forked	Ast3	mm		(see table)		
4.46	Width side protection cage	b9	mm	-	955 / 1155 / 1355		
<b>Performance</b>	5.1	Travel speed (laden / unladen)		Km/h		9,5 / 9,5	
	5.2	Lift speed (laden / unladen)		m/s		0,15 / 0,19	
	5.3	Lowering speed (con / senza carico)		m/s		0,28 / 0,25	
	5.7	Pendenza superabile KB 30' (con / senza carico)		%		0	
	5.8	Max. gradeability (laden / unladen)		%		5	
	5.9	Acceleration time (laden / unladen)		s		6,9 / 5,9	
<b>Electric motor</b>	5.10	Service brake				Electric AC	
	6.1	Traction motor, power KB 60'		KW		2 AC	
	6.2	Lifting motor, performance 15% ED		KW		3	
		Steering motor		KW		0,3 AC	
	6.3	Battery DIN 43531/35/36 A, B, C,				yes	
	6.4	Tension / nominal capacity		V / Ah		24 / 320 - 500	
6.5	Battery weight (± 5%)		Kg		255 - 365		
6.6	Energy consumption according To VDI cycle		KWH/h		-		
<b>Other data</b>	8.1	Control type				Electric AC	
	8.4	Sound level at the driver's ear according to DIN 10 053		dB/(A)		<70	

(1) Valori riferiti ad "h3 3000"  
(2) Valori con quota "b1" di 880 e 1100 mm  
(3) Con pallet "b12" = 800 mm  
(4) Con telaio "b1" = 1100 mm

## Overall dimensions

OVERALL DIMENSIONS OF LIFTING GROUPS

	h3	h24	h1	h4	h12	h28	b1	b6 min.
2500		3300	2310	4800	2735	4335	880	956
3000		3800	2310	5300	3235	4835	880	956
3500		4300	2560	5800	3735	5335	880	956
4000		4800	2810	6300	4235	5835	1100	1170
4500		5300	3060	6800	4735	6335	1100	1170

## Corridor dimensions

MAX 2 AC - DIMENSIONS OF WORKING AND FRONT HEAD AISLE

Pallet	Ast (5)		Ast3 (6)		svolta 90°	
	b1=880	b1=1100	b1=880	b1=1100	b1=880	b1=1100
800 / 800	1080	1300	2780		1775	1850
1000 / 800	1200	1300	2820		1835	1870
1200 / 800	1400	1400	2870		1930	1930
800 / 1000	1080	1300	2970		1865	1945
1000 / 1000	1200	1300	3005		1925	1960
1200 / 1000	1400	1400	3045		2020	2020
800 / 1200	1080	1300	3160		1960	2040
1000 / 1200	1200	1300	3190		2020	2055
1200 / 1200	1400	1400	3225		2110	2110

Ast, Ast3 e svolta a 90° comprendono "a" (spazio di manovra) = 200 mm  
 (5) Valori minimi per corridoi di lavoro con guide a terra  
 (6) Valori minimi per corridoi di testata (i valori sono intesi fra i bordi di raccordo delle eventuali guide a terra)

MAX 2 AC SL - DIMENSIONS OF WORKING AND FRONT HEAD AISLE

Pallet	Ast (5)		Ast3 (6)		svolta 90°	
	b1=880	b1=1100	b1=880	b1=1100	b1=880	b1=1100
800 / 800	1155	1300	2800		1810	1860
1000 / 800	1355	1355	2845		1900	1900
1200 / 800	1555	1555	2900		2000	2000
800 / 1000	1155	1300	2980		1900	1950
1000 / 1000	1355	1355	3020		1990	1990
1200 / 1000	1555	1555	3070		2085	2085
800 / 1200	1155	1300	3170		1990	2045
1000 / 1200	1355	1355	3205		2080	2080
1200 / 1200	1555	1555	3245		2175	2175

Ast, Ast3 e svolta a 90° comprendono "a" (spazio di manovra) = 200 mm  
 (5) Valori minimi per corridoi di lavoro con guide a terra  
 (6) Valori minimi per corridoi di testata (i valori sono intesi fra i bordi di raccordo delle eventuali guide a terra)